



ASX Code: MRP

MacPhersons Resources Ltd

ABN 98 139 357 967
ACN 139 357 967

Contact Details

PO Box 10977
109 Maritana Street
Kalgoorlie WA 6430

T +61 (0) 8 9068 1300
F +61 (0) 8 9068 1310
E info@mrresources.com.au

Capital Structure

Ordinary Shares on issue:
251 M

Options on issue:
22 M
Exercise Price \$0.30
Expiry 31 December 2013

Board of Directors

Ashok Parekh
Chairman – Executive Director

Morrie Goodz
Managing Director – Executive
Director

Jeff Williams
Non-Executive Director

ASX Announcement

18 November 2013

Nimbus Deep Drilling Intersects New Zinc-Silver Stringer Zones

Highlights:

- Deep drilling has intersected New Zinc-Silver Stringer Sulphide zones at depth with spot XRF analyses confirming silver enrichments from:
 - ❖ 514 – 541m Stringer zone with spot analyses up to 20% zinc + 1500g/t silver;
 - ❖ 580 – 600m zone with up to 4% zinc + 500g/t silver; and
 - ❖ Current hole depth is at 606m.
- This drillhole is the deepest historically recorded in the area and will continue to at least the 800m depth.

The Directors of **MacPhersons Resources Limited (ASX: MRP)** are pleased to announce that they have intersected new zinc stringer zone mineralisation in their deep diamond drilling at their 100%-owned Nimbus silver-gold-zinc project located 10km east of Kalgoorlie's superpit gold mine.

Through handheld XRF analyses, the zinc sulphides have been confirmed as being silver rich with initial test spot measurements **up to 1500g/t silver** (Figure 1 below shows the zone at 527-529m). Previous XRF testwork analyses have been shown to provide reasonable indications for silver and zinc content.

Drillhole NBDH010 represents a deeper cross-section of the geological units found at the nearby Nimbus silver mine and provides a **potential new deeper prospective zone** for exploration across the Eastern Goldfields district.

Drilling is co-funded by the EIS which provides a **50% subsidy on drilling costs**.

The drillhole has intersected some highly sheared zones containing quartz veining, sulphides and fuchsitic spotting which will be reviewed in due course.

Drilling is expected to be completed in December with results expected in 2014.

MacPhersons Resources Managing Director Morrie Goodz commented:

"The zinc sulphide stringer zones represent new deeper mineralisation with significant indications of silver enrichments," Mr Goodz said.

"The relative thickness of the stringer zone and intense hydrothermal alteration indicate this area has been the focus of large volumes of mineral rich fluid flow."

"This drilling is deeper and further southeast than any drilling in the Nimbus stratigraphic domain."



Figure 1 – (previous page) shows zinc sulphide stringer zone intersected between 514m and 541m (photo from 527.9m HQ core).

Figure 2 – the location of the Nimbus - Boorara Silver-Gold-Zinc Projects located 10km east of Kalgoorlie's superpit gold mine.

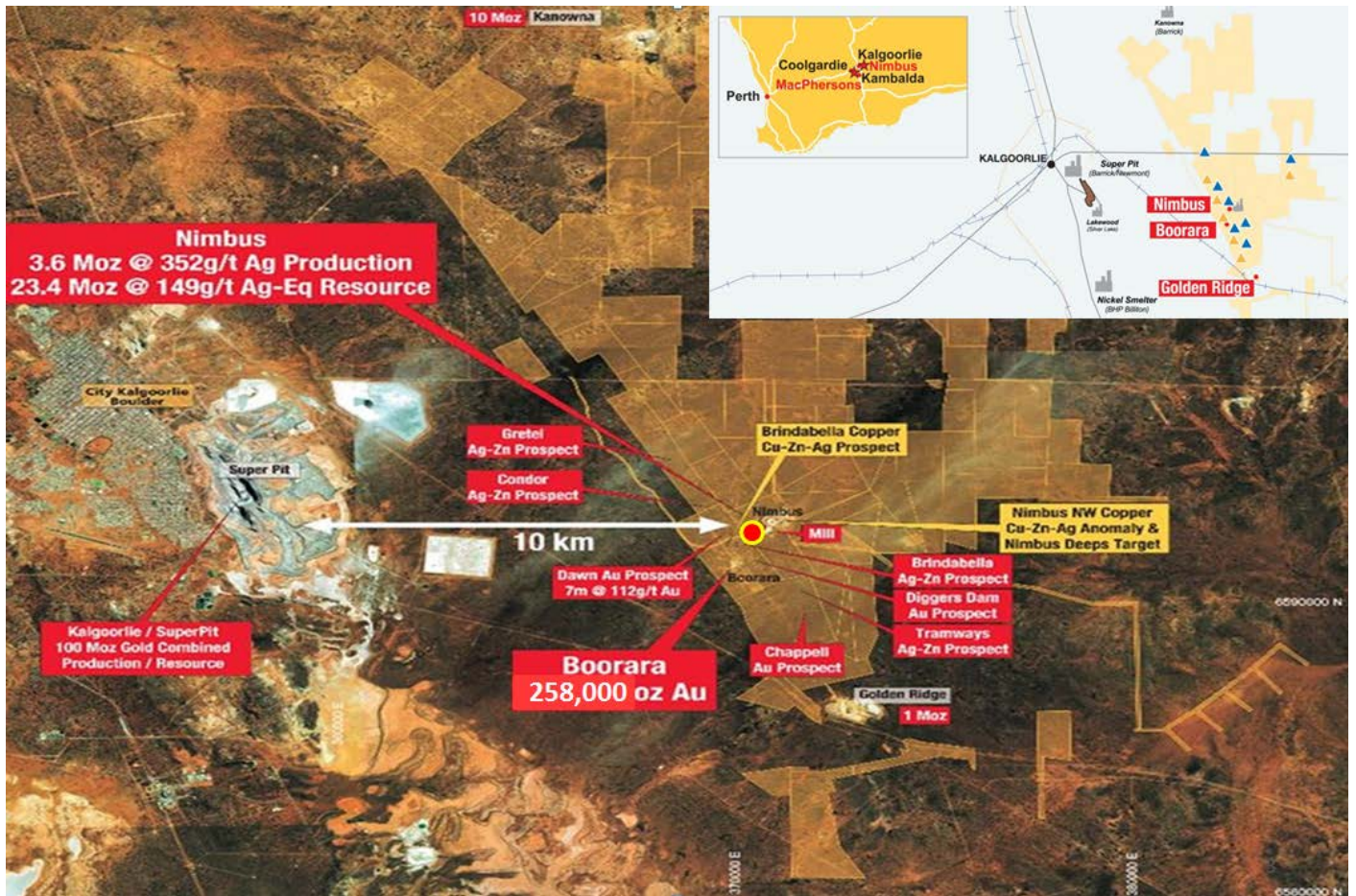


Figure 3 – NBDH010 drillcore showing shear zone related deformation, veining, sulphidation and fuchsite alteration (446-456m).



Figure 4 – NBDH010 is the first drillhole drilled southeast of the Nimbus WLF.



Table 1 – Collar details of NBDH010:

Depth	Easting	Northing	Elevation	Dip	Azimuth
Collar	371290	6593128	394	-55	220

For more information on MacPhersons Resources Limited and to subscribe for regular updates, please visit our website at: www.mrpresources.com.au or contact our Kalgoorlie office.

Morrie Goodz
 Managing Director
 +61 8 9068 1300
info@mrpresources.com.au

About MacPhersons

MacPhersons Resources Ltd (MRP) is a Western Australian company with a number of advanced gold, silver and zinc projects.

The Company's focus is to explore and extend the highly prospective Boorara and MacPhersons geological domains of which the Company holds 100% interest in 20km and 11km of strikelength, respectively, including the Nimbus silver-gold-zinc mine and the namesake MacPhersons open cut gold mine.

To fast track the opportunity to process MacPhersons' ore within the MRP business, the Company has acquired mill processing and mine assets at the Nimbus silver-gold-zinc mine and the Boorara gold mine, located 10 km east of Kalgoorlie's superpit. The assets come with an approved site for ore processing.

The assets have advanced ore reserves and mineral resources statements, mine designs adjacent to and beneath 10 existing open cuts and multiple polymetallic VHMS deposits carrying silver-gold-zinc-lead-copper mineralisation. The Company has also identified a number of new greenfields discoveries.

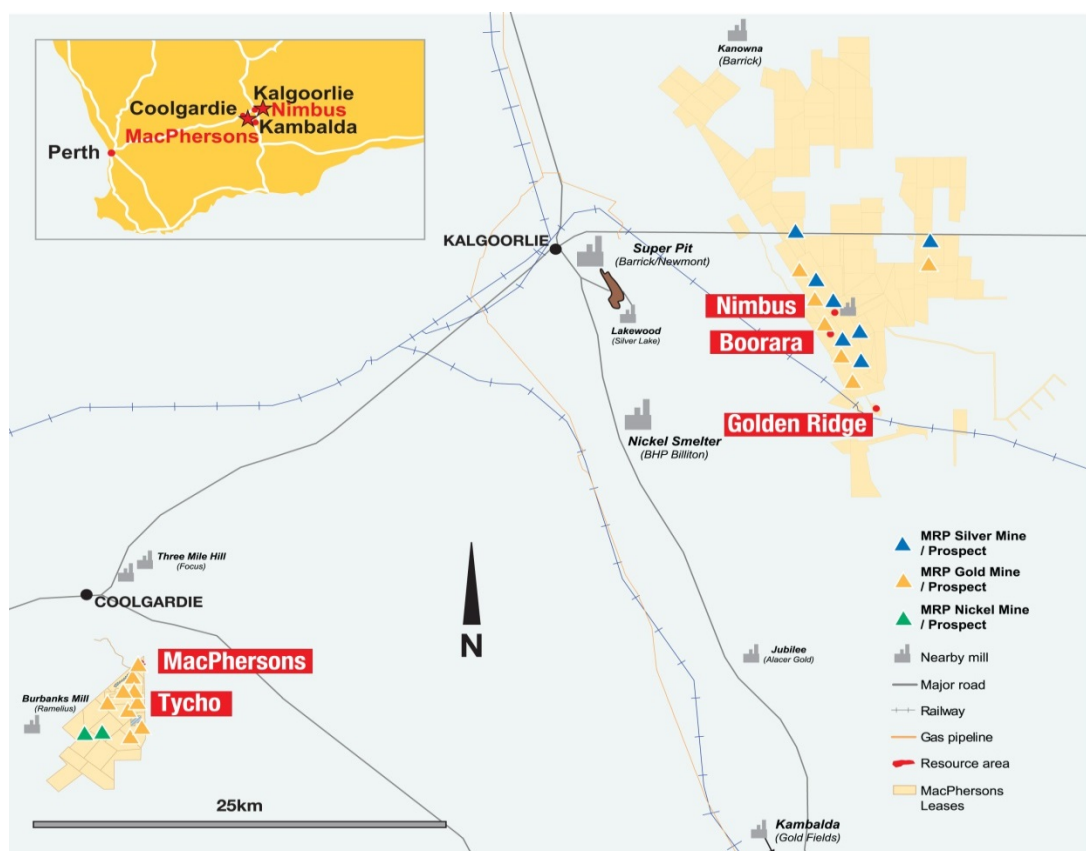


Figure 5 – Location of the Nimbus processing facility and silver mines, Boorara gold-silver-zinc projects, the MacPhersons Reward gold mine and Tycho gold project at Coolgardie.

Competent Person's Statement

The information in this report that relates to mineral resources and exploration results is based on information compiled by Mr Morrie Goodz who is a Fellow of the Australasian Institute of Mining and Metallurgy. Mr Morrie Goodz is a full time officer of MacPhersons Resources Ltd and has sufficient experience which is relevant to the style of mineralisation and type of deposit under consideration and to the activity which he is undertaking to qualify as a Competent Person as defined in the 2004 edition of the "Australasian Code for Reporting of Exploration Results, Mineral Resources and Ore Reserves". Mr Goodz has given his consent to the inclusion in this report of the matters based on the information in the form and context in which it appears.