



MACPHERSONS

June 2015 Quarterly Report

Boorara Reserve Upgrade Nimbus Resource Upgrade

Processing options under review

ASX Code: MRP

Contact Details

PO Box 10977
109 Maritana Street
Kalgoorlie WA 6430

T +61 (0) 8 9068 1300
F +61 (0) 8 9068 1310
E info@mrpresources.com.au

ABN 98 139 357 967

*MacPhersons Resources Ltd
is pleased to present this
report of quarterly activities.*

Morrie Goodz
Managing Director

Board of Directors

Ashok Parekh
Chairman – Executive
Director

Morrie Goodz
Managing Director –
Executive Director

Jeff Williams
Non-Executive Director

Peter Rozenauers
Non-Executive Director

Highlights

Boorara

- ❖ Mining designs completed with new ore reserve update released 29 June 2015
- ❖ Boorara gold ore reserves up 32% on heap leach process option
- ❖ 3-fold increase in Proved Ore category - represents 81% of total ore reserve
- ❖ Gold feasibility studies expanded to include milling option with agitated leach

Nimbus

- ❖ Independent Consultants sign off mineral resource update released 30 April 2015
- ❖ Silver resource up 58% to 20.2 Million ounces
- ❖ Zinc resource up 60% to 104,000 tonnes
- ❖ Gold resource up 66% to 78,000 ounces
- ❖ 83% of silver and 72% of zinc in the measured and indicated resource categories

Corporate

- ❖ Third party options under review for processing of gold projects
- ❖ Process flowsheets under review for silver-zinc processing
- ❖ Cash at bank \$3.1M with adequate funds for planned activities
- ❖ Further rationalisation undertaken to reduce overheads and exploration

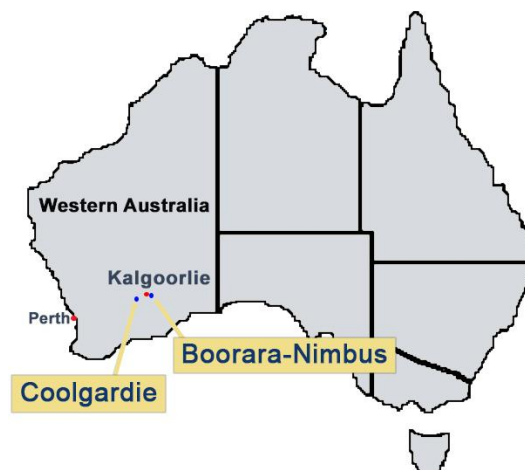


Figure 1: Location of the Boorara, Nimbus and Coolgardie project areas near Kalgoorlie.

MacPhersons Resources Limited (ASX: MRP) is pleased to report that it has made progress during the June Quarter towards its objective of completing mining studies at the Company's Boorara gold project near Kalgoorlie, using a heap leach process model, and is in progress of reviewing a larger gold milling and agitated leach process model.

The Company has completed the processing study for Nimbus silver-zinc project via the flotation model to produce a zinc concentrate followed by a Merrill-Crowe leach, and is now examining options to leach silver and zinc from the concentrate to potentially produce a dore/cathode product stream.

As a result of this ongoing study work, MacPhersons has rationalised the business to reduce staffing and exploration overheads and is in a sound financial position.

Boorara Ore Reserve Statement

The Boorara ore reserve of 4.35 Million tonnes @ 0.99g/t Au has increased by 32% using the original integrated heap leach model from the 2013 ore reserve of 3.30 Million tonnes @ 0.98g/t Au (*full table listed below on page 3 of this announcement*).

An integrated milling option study has indicated that a larger single pit option is viable and the feasibility studies have been extended to include this option.

The Proved ore reserve category has increased from 1.13 Mt @ 0.97g/t Au to 3.51 Mt @ 1.02g/t Au. This is a 3-fold increase in the quantity of the Proved category and an increase in the grade. The current ore reserve is now made up of 81% in the Proved ore reserve category representing a substantial increase in the confidence level of the ore classification (up from 35% in 2013).

The expanded JORC Mineral Resource provided by Independent Consultants CSA Global (*see ASX Announcement 26 February 2015 for the full report*) showed that the size of the Boorara deposit has increased by 47 per cent to 10.8 million tonnes @ 1.0 g/t containing 340,000 ounces of gold. The larger milling option will examine the conversion of a substantial amount of the fresh rock material from resource to reserve on the basis that the heap leach option did not consider the large portion of fresh rock resource material.

The low discovery cost of these ounces has been approximately \$11.30/oz gold and is indicative of the quality of the Boorara deposit and the MRP geology team.

Boorara also has outstanding exploration potential, with the mineralisation remaining open along strike and at depth – note most of the drilling to date only extends down to the 70m depth.

The Boorara mineral resource statement is listed in Tables 5 and 6 on pages 9–10 of this announcement.

Table 1: 2015 Ore Reserve at Boorara

Ore Reserves - Gold								% of reserve
		North stockworks		Crown jewel		South stockworks		
		Tonnes	g/t Au	Tonnes	g/t Au	Tonnes	g/t Au	
Proved	Oxide	808814	0.94	101685	0.95	853427	1.00	80.62%
	Trans.	935883	1.10	179971	0.91	263894	0.97	
	Fresh	172966	1.07	7463	0.88	182111	1.25	
	Total	1917663	1.03	289119	0.92	1299432	1.03	
Probable	Oxide	220192	0.52	18723	0.91	34778	0.69	19.38%
	Trans.	409441	0.99	11483	0.79	1998	1.06	
	Fresh	135904	1.05	0	0.00	10242	1.25	
	Total	765537	0.87	30206	0.86	47018	0.83	
Inferred	Oxide							0.00%
	Trans.							
	Fresh							
	Total							
Totals		2,683,200	0.99	319,325	0.91	1,346,450	1.02	
Grand Total		4,348,975	0.99					

Note: Ore reserve oxide marginal cutoff at 90% met recovery is 0.374g/t Au. Transitional marginal cutoff at 70% met recovery is 0.457g/t Au. Fresh marginal cutoff at 55% recovery is 0.582g/t Au. Differences in totals occur due to rounding.

Nimbus Resource Update

In addition to the Boorara gold reserve update, Independent Resource Consultants, CSA Global released the Nimbus mineral resource estimate (MRE) after the reporting period (see ASX Announcement dated 30th April 2015 for the full report).

Resources at the Nimbus deposit have increased to 12.1 million tonnes at 52 g/t silver, 0.2g/t gold and 0.9% zinc containing 20.2 million ounces of silver, 78,000oz of gold and 104,000 tonnes of zinc (full tables listed on pages 5–8 of this announcement).

This represents a 58 per cent increase in silver, a 60 per cent increase in zinc and a 66 per cent increase in gold compared with the previous 2013 Mineral Resource Estimate Statement.

This includes a high-grade core silver-zinc lode comprising 1.2 million tonnes at 175g/t silver and 3.5% zinc containing 6.9Moz silver and 42,000t of zinc.

The expanded JORC Mineral Resource provided by Independent Consultants CSA Global has also delivered a higher level of confidence with 83% of silver and 72% of zinc now in the measured and indicated resource categories.

This is important because it increases MacPhersons' confidence that the Nimbus tonnes will convert to mining inventory and further extend the forecast life of Nimbus.

As a result, there will be increased material available for both the Nimbus zinc-silver sulphide plant and for the heap leach portion of the overall Nimbus-Boorara project.

The cost of discovering these ounces has been just ~30c/oz of silver, which reflects the quality of the Nimbus deposit and the MacPhersons geology team.

The resources have been subdivided into silver-zinc, silver-only, silver-gold, gold-only and zinc-only lodes. Metallurgical testwork has been commenced on the individual lode types.

MacPhersons' 100 per cent-owned Nimbus Project is located 10km east of Kalgoorlie's Super Pit gold mine. Nimbus is located 1km north-east of the Company's 100% owned Boorara gold project.

Both Nimbus and Boorara deposits boast outstanding exploration potential, with the mineralisation remaining open along strike and at depth.

Corporate

During the quarter, the Company focused on technical studies and metallurgical testwork.

The Company continues to reduce its operating costs.

Table 1: Nimbus and Boorara MRE JORC Code Supporting Table 1 – Sections 1, 2, 3 and 4, can be found in the following ASX announcements:

For Boorara MRE, the full Table 1 is included at the end of the Independent Memorandum issued by CSA Global dated 24th February 2015, which is included in the ASX Announcement dated 26th February 2015.

For Nimbus MRE, the full Table 1 is included at the end of the Independent Memorandum issued by CSA Global dated 28th April 2015, which is included in the ASX Announcement dated 30th April 2015.

Table 2: Nimbus JORC-compliant Resource Summary by Category (for compilation of all resource tables see ASX Announcement dated 30th April 2015 for the full report).

All Material (Stockpiles and Insitu) Summary								
	Rescat	Tonnes	Ag	Au	Zn	Ag	Au	Zn
			(ppm)	(ppm)	(%)	(Ozs)	(Ozs)	(t)
oxide	Measured	355,000	84	0.04	-	956,400	500	-
	Indicated	71,000	9	0.97	-	21,200	2,200	-
	Inferred	9,000	-	1.43	-	-	400	-
trans	Measured	614,000	83	0.13	-	1,646,300	2,600	-
	Indicated	270,000	62	0.40	-	535,900	3,400	-
	Inferred	6,000	-	1.25	-	-	200	-
fresh	Measured	2,428,000	113	0.08	1.8	8,857,300	6,200	44,800
	Indicated	2,841,000	47	0.17	1.1	4,318,400	15,500	30,400
	Inferred	5,142,000	20	0.27	0.6	3,228,500	45,400	28,600
Stockpile Resources	Measured	223,600	64	0.08	0.1	458,600	597	224
	Indicated	-	-	-	-	-	-	-
	Inferred	126,000	57	0.13	0.0	229,400	530	38
Total	Measured	3,620,600	102	0.09	1.2	11,918,600	9,897	45,024
	Indicated	3,182,000	48	0.21	1.0	4,875,500	21,100	30,400
	Inferred	5,283,000	20	0.27	0.5	3,457,900	46,530	28,638
	Total	12,085,600	52	0.20	0.9	20,252,000	77,527	104,062

Mineral resource reported at a cut-off of 12g/t Ag, 0.5% Zn and 0.3g/t Au. Differences in totals occur due to rounding.

Table 3: Nimbus JORC-compliant Resource Summary by Lode Type (for compilation of all resource tables see ASX Announcement dated 30th April 2015 for the full report).

Silver/Zinc Lodes (Zn \geq 1.0%, Ag \geq 25g/t)						
	Rescat	Tonnes	Ag	Zn	Ag	Zn
			(ppm)	(%)	(Ozs)	(t)
oxide	Measured	-	-	-	-	-
	Indicated	-	-	-	-	-
	Inferred	-	-	-	-	-
trans	Measured	-	-	-	-	-
	Indicated	-	-	-	-	-
	Inferred	-	-	-	-	-
fresh	Measured	778,000	211	4.2	5,279,600	32,400
	Indicated	251,000	164	3.0	1,319,900	7,400
	Inferred	191,000	42	1.3	259,000	2,500
Total	Measured	778,000	211	4.2	5,279,600	32,400
	Indicated	251,000	164	3.0	1,319,900	7,400
	Inferred	191,000	42	1.3	259,000	2,500
Total		1,220,000	175	3.5	6,858,500	42,400

Other metal contained within Silver/Zinc Lodes

Au (Ozs)
-
-
-
-
-
-
800
400
100
800
400
100
1,300

Silver Lodes (Ag \geq 25 g/t, Zn <1.0%)				
	Rescat	Tonnes	Ag	Ag
			(ppm)	(Ozs)
oxide	Measured	345,000	86	955,300
	Indicated	14,000	46	20,900
	Inferred	-	-	-
trans	Measured	543,000	94	1,639,500
	Indicated	184,000	91	535,100
	Inferred	-	-	-
fresh	Measured	1,102,000	100	3,533,100
	Indicated	1,303,000	71	2,957,200
	Inferred	1,937,000	47	2,923,600
Total	Measured	1,990,000	96	6,127,900
	Indicated	1,501,000	73	3,513,200
	Inferred	1,937,000	47	2,923,600
Total		5,428,000	72	12,564,700

Other metal contained within Silver Lodes

Au (Ozs)	Zn (t)
200	-
-	-
-	-
600	-
400	-
-	-
2,500	2,000
2,200	1,800
2,000	1,600
3,300	2,000
2,600	1,800
2,000	1,600
7,800	5,300

Table 3: Nimbus JORC-compliant Resource Summary by Lode Type (Continued) - for compilation of all resource tables see ASX Announcement dated 30th April 2015 for the full report).

Zinc Lodes (Zn \geq 1.0%, Ag < 25g/t)					Ag (Ozs)	Au (Ozs)
	Rescat	Tonnes	Zn (%)	Zn (t)		
oxide	Measured	-	-	-	-	-
	Indicated	-	-	-	-	-
	Inferred	-	-	-	-	-
trans	Measured	-	-	-	-	-
	Indicated	-	-	-	-	-
	Inferred	-	-	-	-	-
fresh	Measured	450,000	2.3	10,200	27,100	700
	Indicated	871,000	2.4	20,700	18,700	500
	Inferred	1,313,000	1.8	23,800	10,400	200
Total	Measured	450,000	2.3	10,200	27,100	700
	Indicated	871,000	2.4	20,700	18,700	500
	Inferred	1,313,000	1.8	23,800	10,400	200
Total		2,634,000	2.1	54,700	56,200	1,400

Other metal contained within Zinc Lodes

Gold Lodes (Au \geq 0.5 g/t, Zn <1.0%, Ag < 25g/t)					Ag (Ozs)	Zn (t)
	Rescat	Tonnes	Au (ppm)	Au (Ozs)		
oxide	Measured	10,000	0.83	300	1,000	-
	Indicated	57,000	1.21	2,200	300	-
	Inferred	9,000	1.43	400	-	-
trans	Measured	71,000	0.90	2,100	6,800	-
	Indicated	87,000	1.10	3,100	700	-
	Inferred	6,000	1.25	200	-	-
fresh	Measured	98,000	0.70	2,200	17,500	200
	Indicated	416,000	0.92	12,400	22,600	500
	Inferred	1,700,000	0.79	43,100	35,600	700
Total	Measured	179,000	0.79	4,500	25,400	200
	Indicated	559,000	0.98	17,600	23,700	500
	Inferred	1,715,000	0.79	43,800	35,600	700
Total		2,453,000	0.84	65,900	84,600	1,400

Other metal contained within Gold Lodes

Table 4: Nimbus Stockpiles and TSF JORC Resource (for compilation of all resource tables see ASX Announcement dated 30th April 2015 for the full report).

TSF 1								
Rescat	Volume (m3)	Tonnes	Ag	Au	Zn	Ag	Au	Zn
			(ppm)	(ppm)	(%)	(Ozs)	(Ozs)	(t)
Measured	48,260	82,000	61	0.14	0.03	162,000	360	25
Indicated	-	-	-	-	-	-	-	-
Inferred	74,240	126,000	57	0.13	0.03	229,400	530	38
Total	122,500	208,000	59	0.13	0.03	391,400	890	62

TSF 2 / East Pit Tails								
Rescat	Volume (m3)	Tonnes	Ag	Au	Zn	Ag	Au	Zn
			(ppm)	(ppm)	(%)	(Ozs)	(Ozs)	(t)
Measured	77,920	132,500	63	0.05	0.15	267,000	219	199
Indicated	-	-	-	-	-	-	-	-
Inferred	-	-	-	-	-	-	-	-
Total	77,920	132,500	63	0.05	0.15	267,000	219	199

ROM Stockpile								
Rescat	Volume (m3)	Tonnes	Ag	Au	Zn	Ag	Au	Zn
			(ppm)	(ppm)	(%)	(Ozs)	(Ozs)	(t)
Measured	4,781	9,100	101	0.06	0.01	29,600	18	1
Indicated	-	-	-	-	-	-	-	-
Inferred	-	-	-	-	-	-	-	-
Total	4,781	9,100	101	0.06	0.01	29,600	18	1

Total Surface Stockpiles								
Rescat	Volume (m3)	Tonnes	Ag	Au	Zn	Ag	Au	Zn
			(ppm)	(ppm)	(%)	(Ozs)	(Ozs)	(t)
Measured	130,961	223,600	64	0.08	0.10	458,600	597	224
Indicated	-	-	-	-	-	-	-	-
Inferred	74,240	126,000	57	0.13	0.03	229,400	530	38
Total	205,201	349,600	61	0.10	0.07	688,000	1,127	262

Table 5: Boorara JORC Resource Summary by Category.

Category	Oxidation	Tonnes	Au (g/t)	Au (oz)
Measured	tailings	40,000	0.45	600
	oxide	1,850,000	0.96	57,000
	transitional	1,900,000	0.97	59,400
	fresh	1,140,000	0.91	33,600
	sub total	4,930,000	0.96	150,600
Indicated	oxide	250,000	0.93	7,600
	transitional	760,000	0.96	23,500
	fresh	2,350,000	0.96	72,500
	sub total	3,360,000	0.95	103,600
Inferred	oxide	170,000	1.11	6,000
	transitional	190,000	0.95	5,700
	fresh	2,150,000	1.10	75,700
	sub total	2,500,000	1.09	87,300
Grand Total		10,790,000	0.99	341,500

Mineral resource reported at a cut-off of 0.3g/t Au. Differences in totals occur due to rounding.

See ASX Announcement 26 February 2015 for the full report.

Table 6: Boorara JORC Resource Summary by Weathering.

Category	Oxidation	Tonnes	Au (g/t)	Au (oz)
Oxide	measured	1,890,000	0.96	57,600
	indicated	250,000	0.93	7,600
	inferred	170,000	1.11	6,000
	sub total	2,310,000	0.96	71,200
Transitional	measured	1,910,000	0.97	59,400
	indicated	760,000	0.96	23,500
	inferred	190,000	0.95	5,700
	sub total	2,860,000	0.96	88,600
Fresh	measured	1,140,000	0.91	33,600
	indicated	2,350,000	0.96	72,500
	inferred	2,150,000	1.1	75,700
	sub total	5,660,000	1.00	181,800
Grand total		10,790,000	0.99	341,500

Oxide Measured includes 41,200t of tailings.

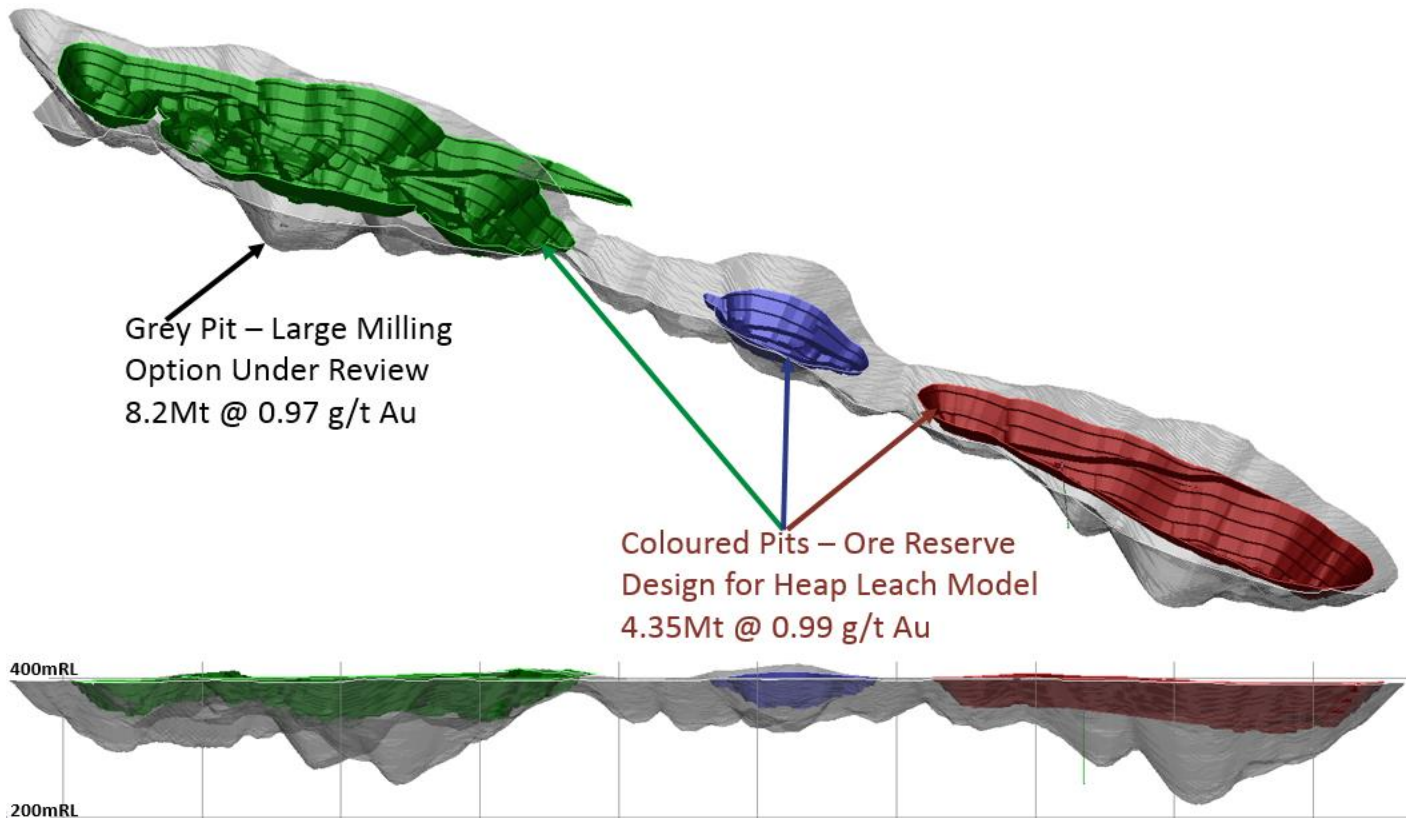
Mineral resource reported at a cut-off of 0.3g/t Au. Differences in totals occur due to rounding.

See ASX Announcement 26 February 2015 for the full report.

Figure 2: Location of the Nimbus-Boorara projects area, 10km east of the Kalgoorlie Superpit, showing the Nimbus Mill site and the Boorara gold project within 1km of the Nimbus mine, which forms part of the Company's project pipeline.



Figure 3: Detailed pit design on the Boorara open pit project for heap leach processing 4.35 Mt @ 0.99g/t gold (coloured open pit designs) versus potential larger pit under current milling option study (single grey pit shell).



About MacPhersons

MacPhersons Resources Ltd (MRP) is a Western Australian resource company with a number of advanced gold, silver and zinc exploration projects.

The Company's focus is to explore and extend the highly prospective Boorara and MacPhersons geological domains of which the Company holds 100% interest in 20km and 11km of strikelength, respectively, including the Nimbus silver-gold-zinc mine and the namesake MacPhersons open cut gold mine.

In 2011, the Company acquired mill processing and mine assets at the Nimbus silver-gold-zinc mine, located 10km east of Kalgoorlie's super pit. These assets came with an approved site for ore processing.

The assets are at an advanced stage of exploration with prospects adjacent to and beneath 10 existing open cuts and with multiple polymetallic VHMS deposits carrying silver-gold- zinc-lead-copper mineralisation, and new greenfields discoveries.

Competent Person's Statement

The information that relates to Mineral Resources is based on information compiled by Mr David Williams, a Competent Person, who is a Member of The Australasian Institute of Mining and Metallurgy. David Williams is employed by CSA Global Pty Ltd, an independent consulting company. Mr Williams has sufficient experience which is relevant to the style of mineralisation and type of deposit under consideration and to the activity which he is undertaking to qualify as a Competent Person as defined in the 2012 Edition of the "Australasian Code for Reporting of Exploration Results, Mineral Resources and Ore Reserves". David Williams consents to the inclusion in the report of the matters based on his information in the form and context in which it appears.

The information in this report that relates to Ore Reserves is based on information compiled by Mr Morrie Goodz who is a Fellow of the Australasian Institute of Mining and Metallurgy. Mr Morrie Goodz is a full time officer of MacPhersons Resources Ltd and has sufficient experience which is relevant to the style of mineralisation and type of deposit under consideration and to the activity which he is undertaking to qualify as a Competent Person as defined in the 2012 edition of the "Australasian Code for Reporting of Exploration Results, Mineral Resources and Ore Reserves". Mr Goodz has given his consent to the inclusion in this report of the matters based on the information in the form and context in which it appears.

For more information on MacPhersons Resources Limited and to subscribe for regular updates, please visit our website at: www.mrpresources.com.au or contact our Kalgoorlie office on info@mrpresources.com.au or 08-9068-1300.

SCHEDULE OF MINING TENEMENTS

Project	Location	Tenement Number	Economic Entity's Interest at Quarter End	Change in Economic Entity's Interest During Quarter
MacPhersons Reward	Coolgardie, WA	L15/312	100%	No Change
MacPhersons Reward	Coolgardie, WA	LA15/352	100%	Under Application
MacPhersons Reward	Coolgardie, WA	M15/0040	100%	No Change
MacPhersons Reward	Coolgardie, WA	M15/0128	100%	No Change
MacPhersons Reward	Coolgardie, WA	M15/0133	100%	No Change
MacPhersons Reward	Coolgardie, WA	M15/0147	100%	No Change
MacPhersons Reward	Coolgardie, WA	M15/0148	100%	No Change
MacPhersons Reward	Coolgardie, WA	M15/1808	100%	No Change
MacPhersons Reward	Coolgardie, WA	P15/4792	100%	No Change
MacPhersons Reward	Coolgardie, WA	P15/4793	100%	No Change
MacPhersons Reward	Coolgardie, WA	P15/4794	100%	No Change
MacPhersons Reward	Coolgardie, WA	P15/4795	100%	No Change
MacPhersons Reward	Coolgardie, WA	P15/5261	100%	No Change
MacPhersons Reward	Coolgardie, WA	P15/5273	100%	No Change
MacPhersons Reward	Coolgardie, WA	P15/5274	100%	No Change
MacPhersons Reward	Coolgardie, WA	P15/5719	100%	No Change
MacPhersons Reward	Coolgardie, WA	P15/5720	100%	No Change
MacPhersons Reward	Coolgardie, WA	P15/5721	100%	No Change
MacPhersons Reward	Coolgardie, WA	P15/5722	100%	No Change
MacPhersons Reward	Coolgardie, WA	P15/5723	100%	No Change
MacPhersons Reward	Coolgardie, WA	P15/5724	100%	No Change
MacPhersons Reward	Coolgardie, WA	P15/5725	100%	No Change
MacPhersons Reward	Coolgardie, WA	P15/5901	100%	No Change
MacPhersons Reward	Coolgardie, WA	P15/5902	100%	No Change

Nimbus/Boorara	Kalgoorlie, WA	E26/159	100%	No Change
Nimbus/Boorara	Kalgoorlie, WA	E25/504	100%	No Change
Nimbus/Boorara	Kalgoorlie, WA	E25/505	100%	No Change
Nimbus/Boorara	Kalgoorlie, WA	E25/511	100%	No Change
Nimbus/Boorara	Kalgoorlie, WA	L25/0032	100%	No Change
Nimbus/Boorara	Kalgoorlie, WA	L26/0240	100%	No Change
Nimbus/Boorara	Kalgoorlie, WA	L26/0252	100%	No Change
Nimbus/Boorara	Kalgoorlie, WA	L26/0266	100%	No Change
Nimbus/Boorara	Kalgoorlie, WA	L25/0035	100%	No Change
Nimbus/Boorara	Kalgoorlie, WA	L25/0036	100%	No Change

Project	Location	Tenement Number	Economic Entity's Interest at Quarter End	Change in Economic Entity's Interest During Quarter
Nimbus/Boorara	Kalgoorlie, WA	LA26/0270	100%	No Change
Nimbus/Boorara	Kalgoorlie, WA	M25/0355	100%	No Change
Nimbus/Boorara	Kalgoorlie, WA	M26/0029	100%	No Change
Nimbus/Boorara	Kalgoorlie, WA	M26/0161	100%	No Change
Nimbus/Boorara	Kalgoorlie, WA	M26/0277	100%	No Change
Nimbus/Boorara	Kalgoorlie, WA	M26/0318	100%	No Change
Nimbus/Boorara	Kalgoorlie, WA	M26/0490	100%	No Change
Nimbus/Boorara	Kalgoorlie, WA	M26/0598	100%	No Change
Nimbus/Boorara	Kalgoorlie, WA	P25/1953	100%	No Change
Nimbus/Boorara	Kalgoorlie, WA	P25/1957	100%	No Change
Nimbus/Boorara	Kalgoorlie, WA	P25/1958	100%	No Change
Nimbus/Boorara	Kalgoorlie, WA	P25/2003	100%	No Change
Nimbus/Boorara	Kalgoorlie, WA	P25/2004	100%	No Change
Nimbus/Boorara	Kalgoorlie, WA	P25/2005	100%	No Change
Nimbus/Boorara	Kalgoorlie, WA	P25/2006	100%	No Change
Nimbus/Boorara	Kalgoorlie, WA	P25/2007	100%	No Change
Nimbus/Boorara	Kalgoorlie, WA	P25/2008	100%	No Change
Nimbus/Boorara	Kalgoorlie, WA	P25/2009	100%	No Change
Nimbus/Boorara	Kalgoorlie, WA	P25/2010	100%	No Change
Nimbus/Boorara	Kalgoorlie, WA	P25/2011	100%	No Change
Nimbus/Boorara	Kalgoorlie, WA	P25/2012	100%	No Change
Nimbus/Boorara	Kalgoorlie, WA	P25/2013	100%	No Change
Nimbus/Boorara	Kalgoorlie, WA	P25/2014	100%	No Change
Nimbus/Boorara	Kalgoorlie, WA	P25/2015	100%	No Change
Nimbus/Boorara	Kalgoorlie, WA	P25/2016	100%	No Change
Nimbus/Boorara	Kalgoorlie, WA	P25/2017	100%	No Change
Nimbus/Boorara	Kalgoorlie, WA	P25/2061	100%	No Change
Nimbus/Boorara	Kalgoorlie, WA	P25/2068	100%	No Change
Nimbus/Boorara	Kalgoorlie, WA	P25/2069	100%	No Change
Nimbus/Boorara	Kalgoorlie, WA	P25/2192	100%	No Change
Nimbus/Boorara	Kalgoorlie, WA	P25/2193	100%	No Change
Nimbus/Boorara	Kalgoorlie, WA	P25/2194	100%	No Change
Nimbus/Boorara	Kalgoorlie, WA	P25/2195	100%	No Change
Nimbus/Boorara	Kalgoorlie, WA	P25/2196	100%	No Change
Nimbus/Boorara	Kalgoorlie, WA	P25/2229	100%	No Change
Nimbus/Boorara	Kalgoorlie, WA	P25/2230	100%	No Change
Nimbus/Boorara	Kalgoorlie, WA	P25/2231	100%	No Change

Project	Location	Tenement Number	Economic Entity's Interest at Quarter End	Change in Economic Entity's Interest During Quarter
Nimbus/Boorara	Kalgoorlie, WA	P25/2247	100%	No Change
Nimbus/Boorara	Kalgoorlie, WA	P25/2261	100%	No Change
Nimbus/Boorara	Kalgoorlie, WA	P25/2264	100%	No Change
Nimbus/Boorara	Kalgoorlie, WA	P25/2265	100%	No Change
Nimbus/Boorara	Kalgoorlie, WA	P25/2266	100%	No Change
Nimbus/Boorara	Kalgoorlie, WA	P25/2292	100%	Granted
Nimbus/Boorara	Kalgoorlie, WA	PA25/2322	100%	Under Application
Nimbus/Boorara	Kalgoorlie, WA	P26/3634	100%	No Change
Nimbus/Boorara	Kalgoorlie, WA	P26/3635	100%	No Change
Nimbus/Boorara	Kalgoorlie, WA	P26/3636	100%	No Change
Nimbus/Boorara	Kalgoorlie, WA	P26/3640	100%	No Change
Nimbus/Boorara	Kalgoorlie, WA	P26/3699	100%	No Change
Nimbus/Boorara	Kalgoorlie, WA	P26/3700	100%	No Change
Nimbus/Boorara	Kalgoorlie, WA	P26/3704	100%	No Change
Nimbus/Boorara	Kalgoorlie, WA	P26/3741	100%	No Change
Nimbus/Boorara	Kalgoorlie, WA	P26/3742	100%	No Change
Nimbus/Boorara	Kalgoorlie, WA	P26/3832	100%	No Change
Nimbus/Boorara	Kalgoorlie, WA	P26/3882	100%	No Change
Nimbus/Boorara	Kalgoorlie, WA	P26/3883	100%	No Change
Nimbus/Boorara	Kalgoorlie, WA	P26/3884	100%	No Change
Nimbus/Boorara	Kalgoorlie, WA	P26/3941	100%	No Change
Nimbus/Boorara	Kalgoorlie, WA	P26/3984	100%	No Change
Nimbus/Boorara	Kalgoorlie, WA	P26/3985	100%	No Change
Nimbus/Boorara	Kalgoorlie, WA	P26/3986	100%	No Change
Nimbus/Boorara	Kalgoorlie, WA	P26/3987	100%	No Change
Nimbus/Boorara	Kalgoorlie, WA	P26/3996	100%	No Change
Nimbus/Boorara	Kalgoorlie, WA	P26/3997	100%	No Change
Nimbus/Boorara	Kalgoorlie, WA	P26/3998	100%	No Change
Nimbus/Boorara	Kalgoorlie, WA	P26/3999	100%	No Change
Nimbus/Boorara	Kalgoorlie, WA	P26/4020	100%	Granted
Nimbus/Boorara	Kalgoorlie, WA	PA26/4035	100%	Under Application
Nimbus/Boorara	Kalgoorlie, WA	PA26/4036	100%	Under Application
Nimbus/Boorara	Kalgoorlie, WA	P27/2118	100%	No Change
Nimbus/Boorara	Kalgoorlie, WA	P27/2119	100%	No Change
Nimbus/Boorara	Kalgoorlie, WA	P27/2120	100%	No Change
Nimbus/Boorara	Kalgoorlie, WA	P27/2121	100%	No Change
Nimbus/Boorara	Kalgoorlie, WA	P27/2122	100%	No Change

Project	Location	Tenement Number	Economic Entity's Interest at Quarter End	Change in Economic Entity's Interest During Quarter
Nimbus/Boorara	Kalgoorlie, WA	P27/2123	100%	No Change
Nimbus/Boorara	Kalgoorlie, WA	P27/2124	100%	No Change
Nimbus/Boorara	Kalgoorlie, WA	P27/2125	100%	No Change
Nimbus/Boorara	Kalgoorlie, WA	P27/2126	100%	No Change
Nimbus/Boorara	Kalgoorlie, WA	P27/2127	100%	No Change
Nimbus/Boorara	Kalgoorlie, WA	P27/2128	100%	No Change
Nimbus/Boorara	Kalgoorlie, WA	P27/2129	100%	No Change
Nimbus/Boorara	Kalgoorlie, WA	P27/2138	100%	No Change
Nimbus/Boorara	Kalgoorlie, WA	P27/2139	100%	No Change
Nimbus/Boorara	Kalgoorlie, WA	P27/2140	100%	No Change
Nimbus/Boorara	Kalgoorlie, WA	P27/2141	100%	No Change
Nimbus/Boorara	Kalgoorlie, WA	P27/2142	100%	No Change
Nimbus/Boorara	Kalgoorlie, WA	P27/2146	100%	No Change
Nimbus/Boorara	Kalgoorlie, WA	P27/2147	100%	No Change
Nimbus/Boorara	Kalgoorlie, WA	P27/2148	100%	No Change
Nimbus/Boorara	Kalgoorlie, WA	P26/3791	100%	Completed Farm-In
Nimbus/Boorara	Kalgoorlie, WA	P26/3792	100%	Completed Farm-In
Nimbus/Boorara	Kalgoorlie, WA	P26/3793	100%	Completed Farm-In
Nimbus/Boorara	Kalgoorlie, WA	P26/3794	100%	Completed Farm-In
Nimbus/Boorara	Kalgoorlie, WA	P26/3795	100%	Completed Farm-In
Nimbus/Boorara	Kalgoorlie, WA	P26/3796	100%	Completed Farm-In
Nimbus/Boorara	Kalgoorlie, WA	P26/3797	100%	Completed Farm-In
Nimbus/Boorara	Kalgoorlie, WA	P26/3798	100%	Completed Farm-In
Nimbus/Boorara	Kalgoorlie, WA	P26/3799	100%	Completed Farm-In
Nimbus/Boorara	Kalgoorlie, WA	P26/3800	100%	Completed Farm-In
Nimbus/Boorara	Kalgoorlie, WA	P27/2041	100%	Completed Farm-In
Nimbus/Boorara	Kalgoorlie, WA	P27/2042	100%	Completed Farm-In
Nimbus/Boorara	Kalgoorlie, WA	P27/2043	100%	Completed Farm-In
Nimbus/Boorara	Kalgoorlie, WA	P27/2044	100%	Completed Farm-In
Nimbus/Boorara	Kalgoorlie, WA	P27/2045	100%	Completed Farm-In
Nimbus/Boorara	Kalgoorlie, WA	P27/2050	100%	Completed Farm-In
Nimbus/Boorara	Kalgoorlie, WA	P27/2051	100%	Completed Farm-In
Nimbus/Boorara	Kalgoorlie, WA	P27/2052	100%	Completed Farm-In